



# Hikvision Keyboard DS-1005KI

## Integration App-note

7 April 2022

# Contents

1. Introduction.....	3
1.1 Requirements .....	3
1.1.1 General Requirements.....	3
1.1.2 License Requirements .....	3
2. Setup.....	4
2.1 Open Controller Setup Window .....	4
2.2 Configure Controller .....	4
2.2.1 Map Controller Buttons.....	5
3. Operation.....	6
3.1 Open Cameras Tab .....	6
3.2 Controller Buttons .....	6
3.3 Joystick.....	7
4. Troubleshooting .....	8
5. Conclusion .....	11

## 1. Introduction

This document provides details for configuring the Hikvision Keyboard for operation within the CathexisVision Windows software. This keyboard is not integrated in the CathexisVision Linux software.



### 1.1 Requirements

#### 1.1.1 General Requirements

- CathexisVision 2016 + (**Windows Version only**)
- A PTZ enabled camera

#### 1.1.2 License Requirements

No license is required to install this HikVision keyboard.

#### USEFUL LINKS

To view **tutorial videos** on CathexisVision setup, visit <https://cathexisvideo.com/resources/videos>

Find answers to Cathexis **Frequently Asked Questions**: <https://cathexis.crisp.help/en/?1557129162258>

#### A NOTE ON CAMERA CHANNELS

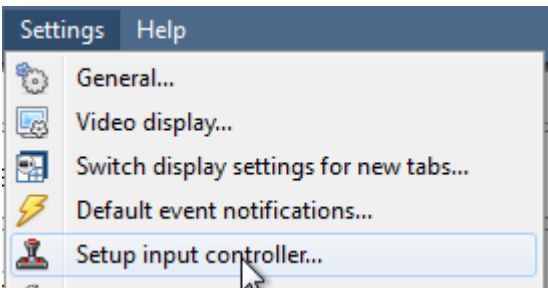
The CathexisVision software packages have **limits on camera channels**. A multi-sensor camera is physically a single device (camera) but it **requires a camera channel for each one of the internal cameras**. The same applies to an encoder: a 16-channel encoder will account for 16 camera channels on the CathexisVision software, even though it is a single device. Even when a camera or device only uses a single IP license, the camera channel limit will still apply.

## 2. Setup

Connect the controller to the CathesisVision unit using the USB-cable. Open CathesisVision.

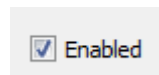
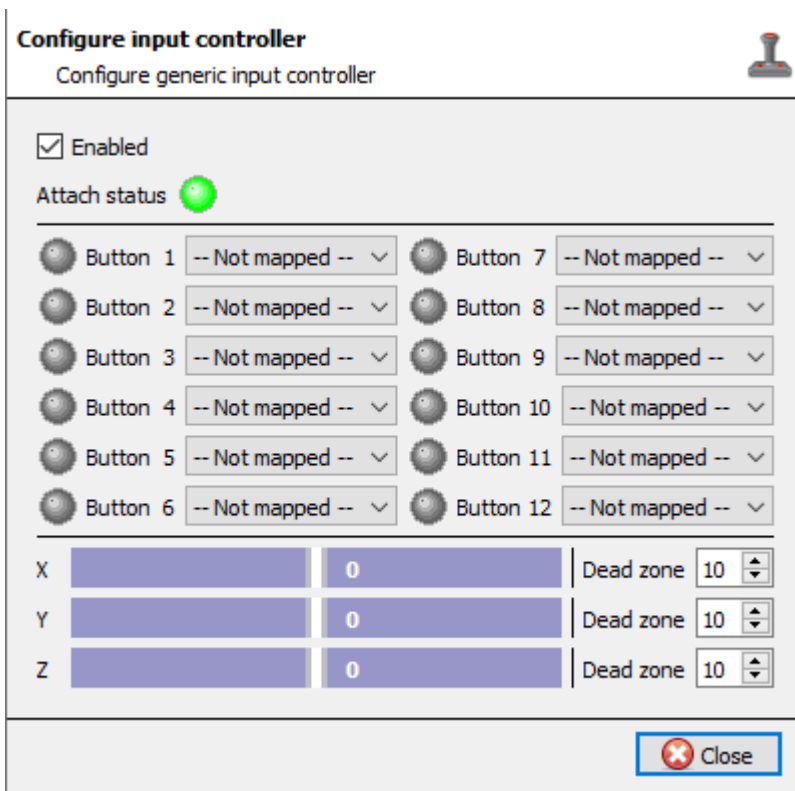
### 2.1 Open Controller Setup Window

The controller needs to be enabled and the buttons must be mapped in order to use the joystick. To configure the controller, open the setup window by following the navigation below:



Settings Menu / Setup input Controller

### 2.2 Configure Controller



To use the controller, make sure that **Enabled** is **checked**.



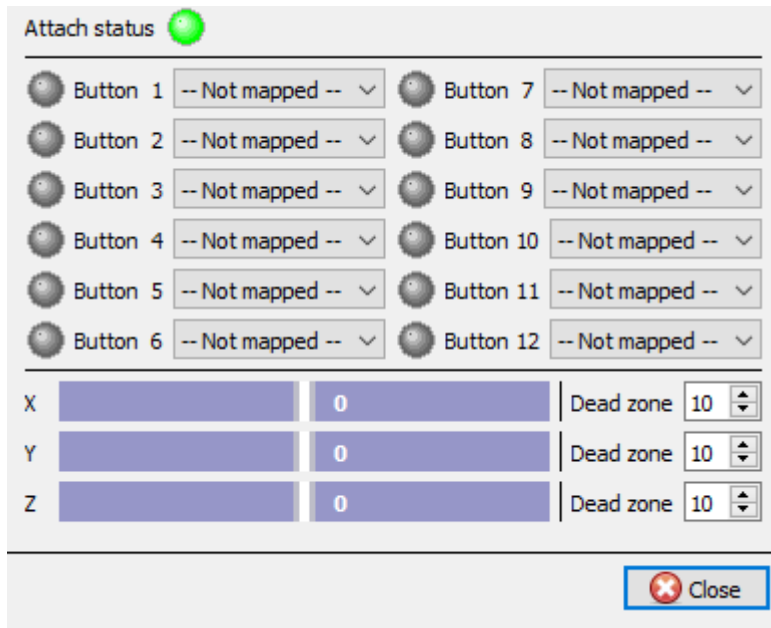
If **Attach status** is green, the controller is plugged in and enabled.



If **Attach status** is greyed out, the controller has either not been enabled or it is unplugged.

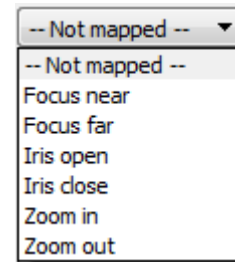
See below for Mapping the buttons.

## 2.2.1 Map Controller Buttons



Pressing one of the controller's buttons will turn the corresponding button icon green.

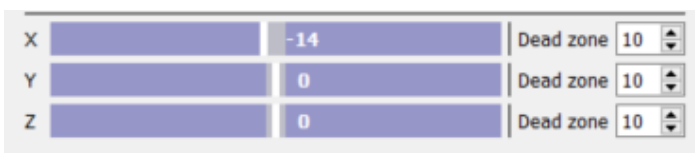
Map the relevant button to the desired action by choosing from the options in the drop-down menu:



### 2.2.1.1 Set Dead Zones

The dead zone is the area around the center of the joystick that does not respond to movement. It is designed to cut down on accidental movement caused by jitter. The higher the dead zone is set (below), the larger the area in which the joystick will not respond to movement.

Set the dead zone for the X, Y and Z axes.



The white line represents the joystick along the axis. It will move once the joystick moves out of the dead zone. The grey area represents the dead zone. It will increase/decrease with the corresponding setting.

### 2.2.1.2 Test the Dead Zone Settings

To test the dead zone settings, perform the movements indicated in the table below.

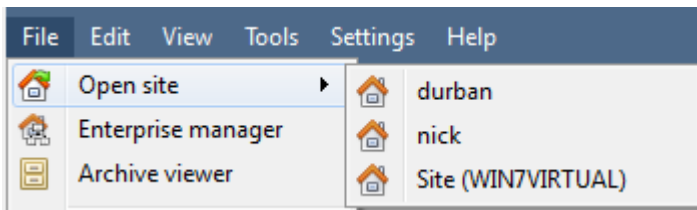
Axis	Test
X-axis	Move joystick left to right
Y-axis	Move joystick up and down
Z-axis	Twist the top of the joystick clockwise/anti-clockwise.

### 3. Operation

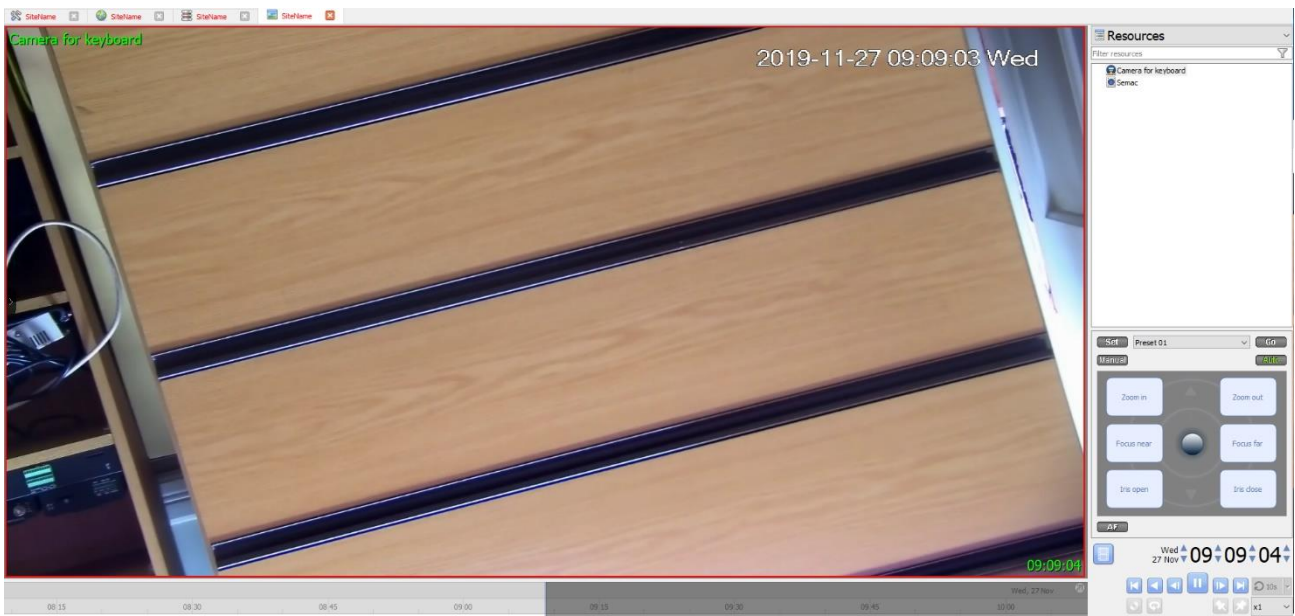
This section will deal with the operation of the controller within the cameras tab of CathesisVision.

**Note:** The joystick will only function with a PTZ camera.

#### 3.1 Open Cameras Tab



File / Open Site / Select Site



In the cameras tab, select the PTZ camera.

#### 3.2 Controller Buttons



On the body of the controller, pressing any of the buttons will perform the action that was mapped in **Section 2 b**.

### 3.3 Joystick

Control the PTZ camera using the joystick.

<b>Movement</b>	<b>Action on Joystick</b>
<b>Left/Right</b>	Tilt the joy stick left/right
<b>Up/Down</b>	Tilt the joy stick up/down
<b>Zoom In/Out</b>	Twist the top of the joystick clockwise/anti-clockwise

## 4. Troubleshooting

If the Hikvision keyboard is not being detected in the software, it may be necessary to change the driver from within Windows.

1. If the HikVision Keyboard cannot be added:



Go to control panel.



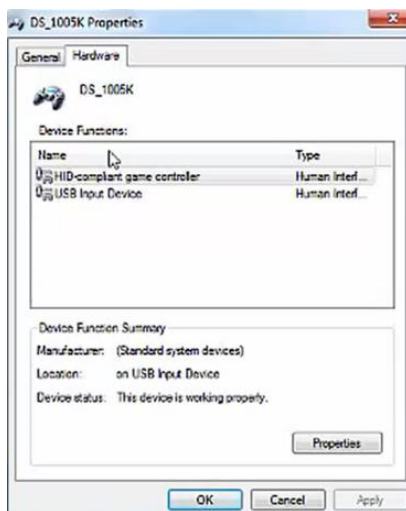
Select hardware and Sound.

2. Next, navigate to Devices and printers.

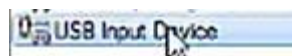


3. The Keyboard will appear but will be using the incorrect driver which means the driver must be changed.


4. Right-click on the driver and select properties and navigate to the Hardware section:



5. Double-click on the device function shown (USB Input Device):





6. Double click and under the 'General' section and navigate to Change settings: 



7. On Driver, select **Update Driver**: 

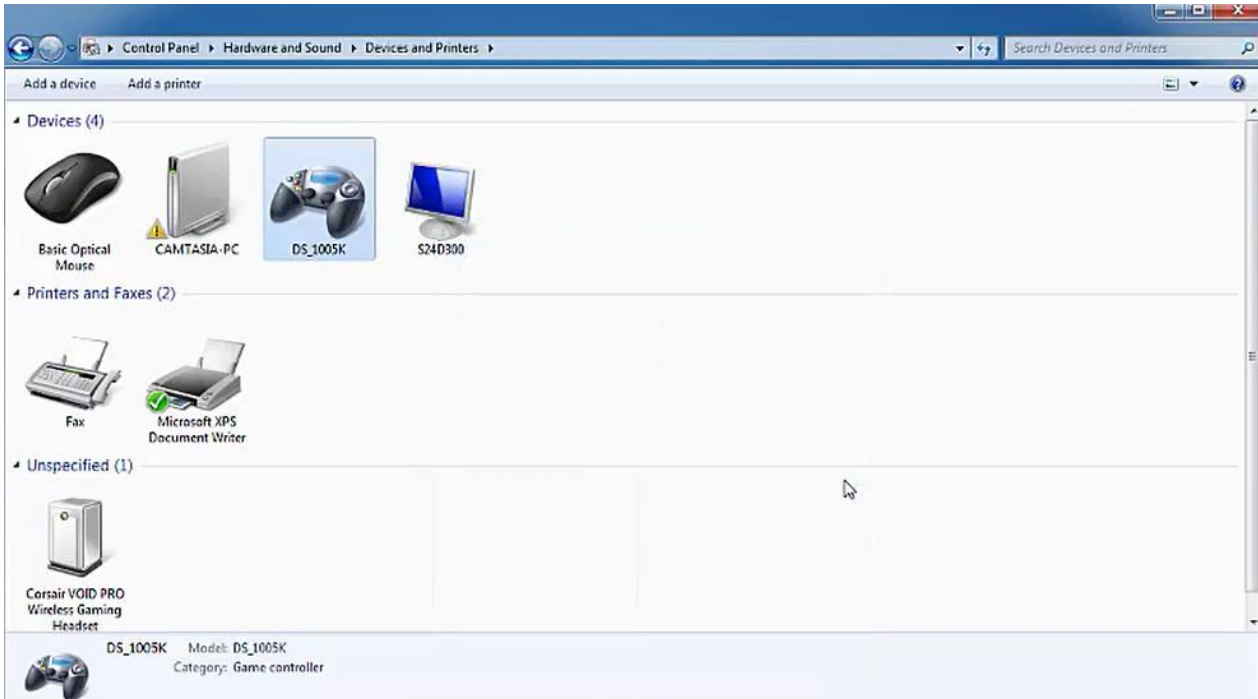


8. Browse for software. After this, click 'Let me pick from a list of device drivers on my computer'.



9. The incorrect device and USB input device should appear, **select the USB input device** and double-click or say next.

10. DS\_1005KI (OR DS\_1005K) is the Keyboard and the Driver to select and it should then be picked up as a game controller:



## 5. Conclusion

This app-note was designed to deal specifically with this integration.

For further information about the CathesisVision software, consult the main manual (<http://cathesisvideo.com/>).

For support, email [support@cat.co.za](mailto:support@cat.co.za)